






44 John Street, Erskineville

3  1  0 

Charing Two Level Townhouse in Heart of Erskineville - Pet Friendly

This beautiful two level Victorian townhouse features fresh modern interiors with polish timber floors throughout, the entry level floor plan includes third bedroom, spacious lounge, full bathroom with shower over bath & sun-filled kitchen with stainless steel appliances & combined dining. Upstairs is two double bedrooms both with built-ins and balcony off the main bedroom.

Located on one of the area's most desired streets, it's just a short stroll to Erskineville and Newtown train stations and all the dining, entertainment and shopping King Street has to offer.

LEASED

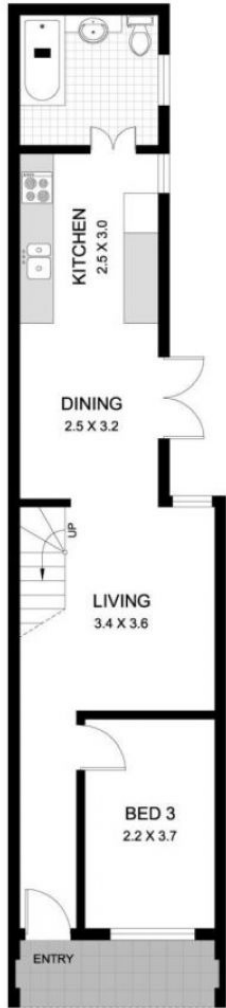
View
As advertised or
By appointment

Joshua Allen
0404 184 158

JT ALLEN



JOHN STREET
SITE PLAN
(at reduced scale)

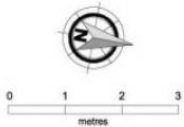


LEVEL 1



LEVEL 2

Approximate Areas:	
Internal Floorspace:	71m ²
External:	58m ²
Land Size:	108m ²



44 JOHN STREET
ERSKINEVILLE