



705/46 Riley Street, Woolloomooloo

1  2  0 

New York Style Living

Come and experience what everyone is talking about - New York has come to Sydney!

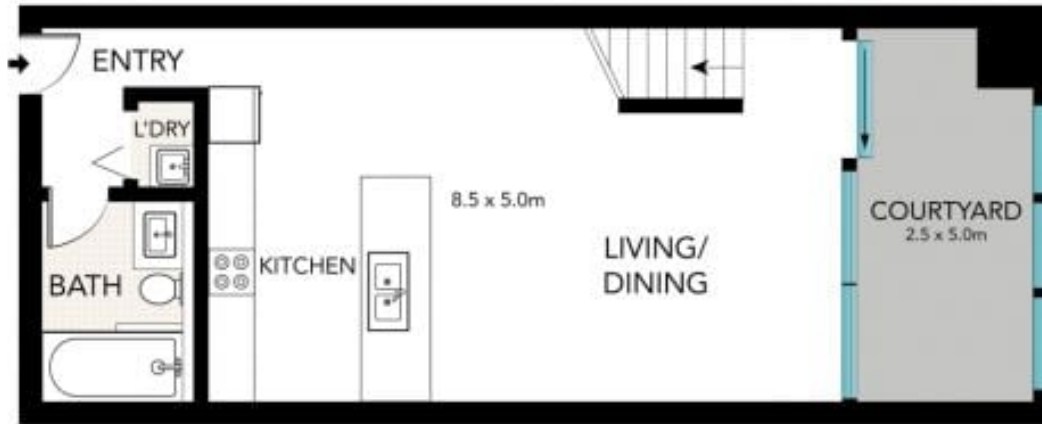
Located for lifestyle in the recently redeveloped 'Cityford Building', this apartment offers oversized proportions, 6 meter high ceilings, top quality finishes and numerous entertaining area's.

LEASED

View  
As advertised or  
By appointment

Joshua Allen  
0404 184 158

# JT ALLEN



FIRST FLOOR



SECOND FLOOR



INT: 82 m<sup>2</sup>  
EXT: 13 m<sup>2</sup>



This floor plan was prepared by WWW.CRYINGOUTLOUD.COM.AU for illustration purposes only. This document does not constitute any part of an offer or contract. Dimensions are approximate only. Copyright © 2017 Crying Out Loud. All Rights Reserved.

Unit 704/46 Riley Street, Woolloomooloo