



27/67 Ocean Street, Woollahra

2  1  1 

Modern Two Bedroom Apartment with Harbour Bridge City Views

Email agent to book into open inspection or to apply.

Offering a quiet sunny north east corner position, this spacious apartment of approx 102sqm has a great floor plan with only one common wall.

All rooms have a light and airy aspect, with views to the Harbour Bridge and Opera house, as well as wonderful district views of the Woollahra tree tops. Generous kitchen which opens to a separate dining area, with a extremely spacious living room which flows to a sheltered north entertaining balcony.

Fabulously located next to Ghiswick Gardens and one level block away from Queens Street or the Edgecliff centre with transport at the door.

- + Two double bedrooms, master with built-ins
- + Full bathroom + guest W/C
- + Spacious open plan living, separate dining
- + Wooden floorboards throughout

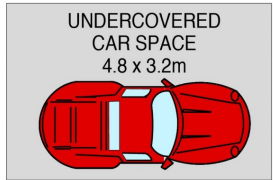
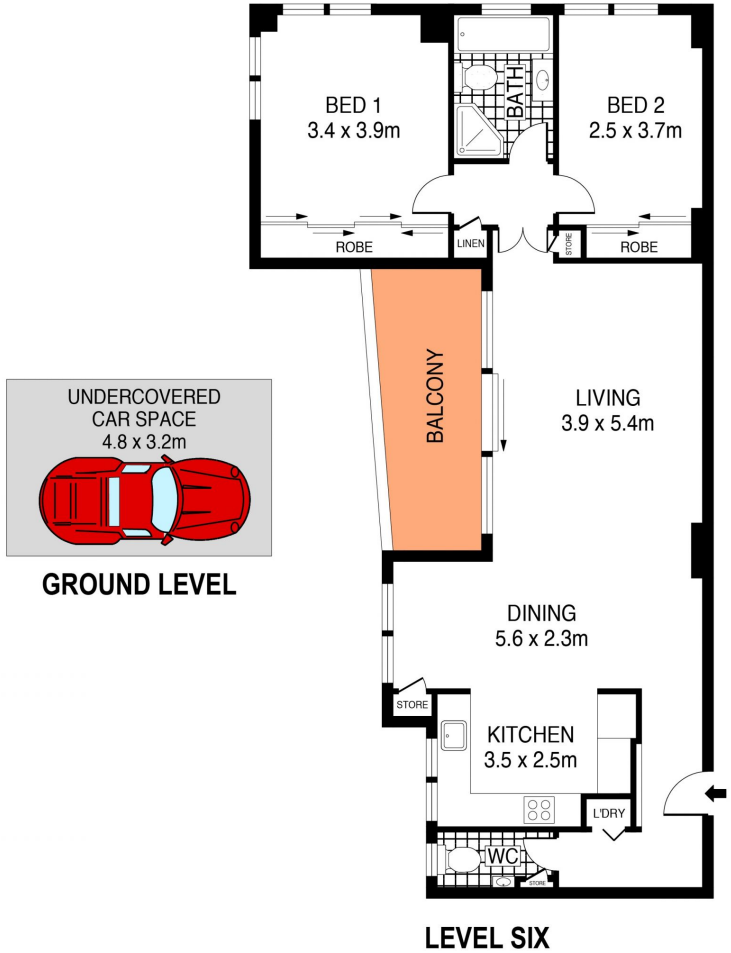
LEASED

View

As advertised or
By appointment

Joshua Allen
0404 184 158

JT ALLEN



GROUND LEVEL



PLANS SHOWN ONLY INDICATIVE OF LAYOUT. DIMENSIONS ARE APPROXIMATE.
Ref. No. 95209

