
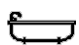





8/127 Birrell Street, Waverley

2  1  1 

## Art-Deco Charm in Prime Lifestyle Setting

This charming apartment, one of just 12 in the block promises a sanctuary of comfort and convenience. Perfectly positioned in a quiet rear setting, this tastefully renovated first-floor apartment offers an unparalleled living experience with freshly painted interiors and high ornate ceilings.

With only one common wall, your privacy is assured. Step outside to find a lock-up garage with an auto door and access to a lovely common garden. Situated mid-way between Tamarama Beach and Centennial Park, directly opposite Waverley Park, and within proximity of Brone Road cafes, Westfield, and Bondi Junction station, your new home boasts easy access to all Sydney's east has to offer.

Features:

SOLD

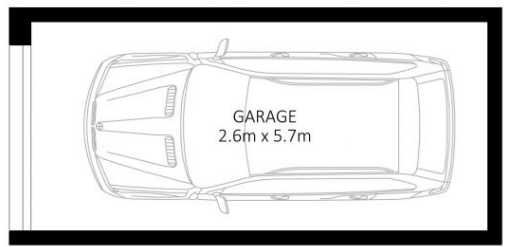
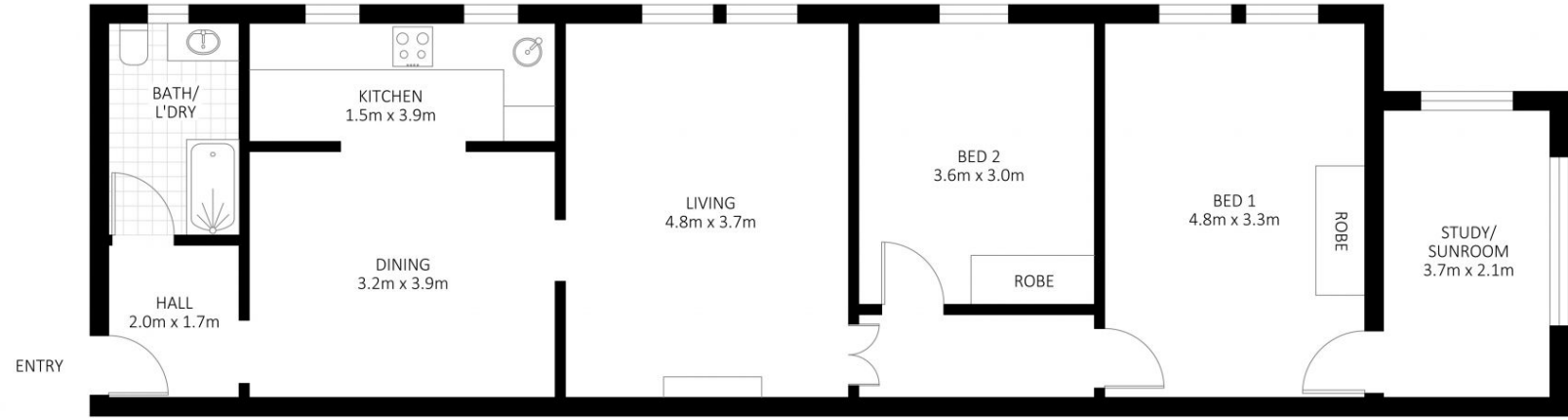
View

As advertised or  
By appointment

Joshua Allen  
0404 184 158

Warren Becker  
0404 730 358

# JT ALLEN



# JT ALLEN

Disclaimer: Plans shown are for presentation purposes and are not part of any legal document. All measurements and figures are approximate.