



8/155 Victoria Road, Bellevue Hill

2  1  0 

## Art Deco Haven Brimming with Character

Discover a hidden gem in the sought-after 'Wembley' block, an Art Deco haven brimming with character, perched gracefully on the first floor. From the moment you walk through the beautifully preserved wood-panelled entrance, it's clear this charming unit is something truly special.

The flexible floor plan offers two comfortable bedrooms, a well-sized bathroom, and abundant storage throughout. Whether you're looking to entertain or simply relax, the generous living and dining areas provide ample room. The large eat-in kitchen offers the perfect setting for whipping up all your favourite dishes while still feeling connected to the home's warm, welcoming vibe.

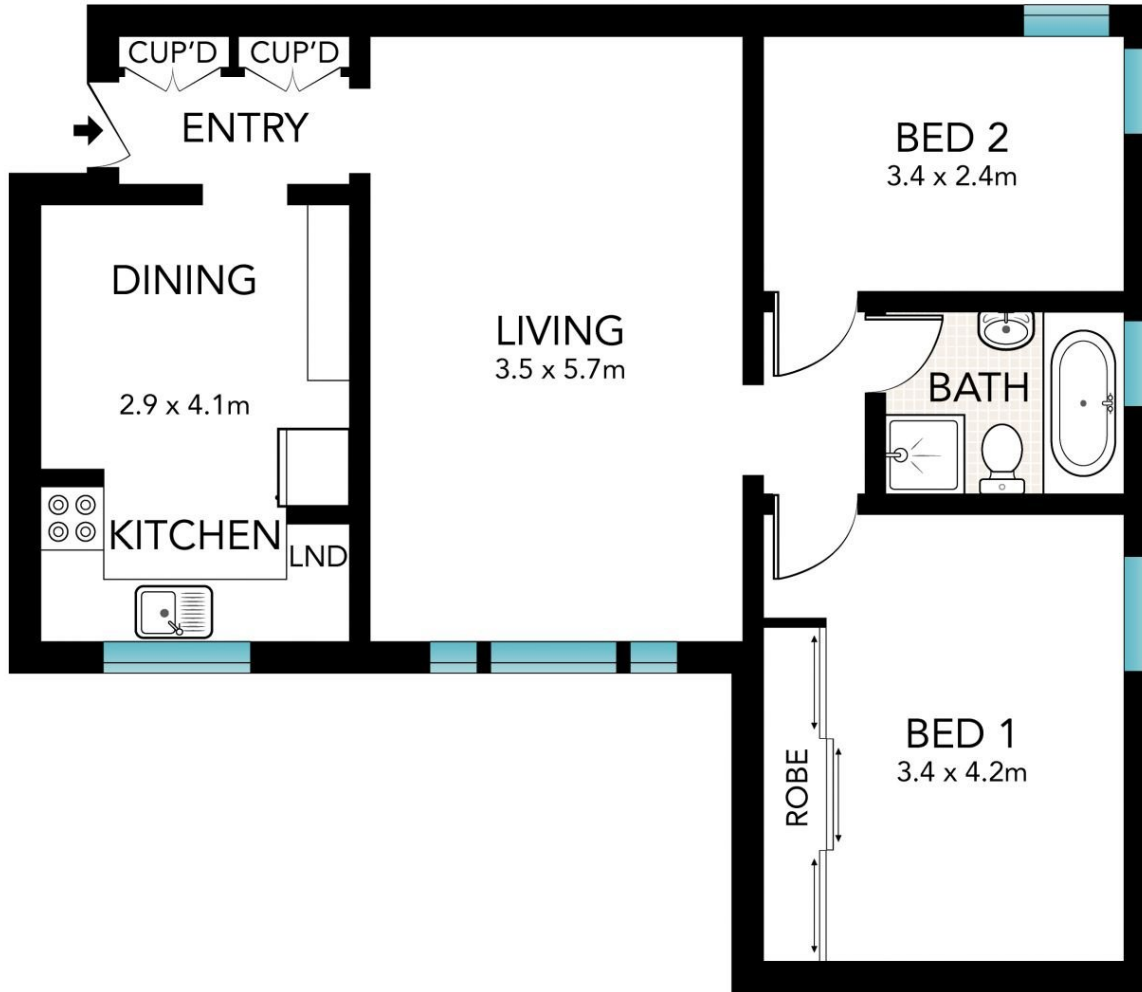
Stained glass windows greet you in the common areas, casting playful hues of light as you make your way to the first-floor retreat. The unit overlooks tiered internal gardens and enjoys serene views towards Bondi, creating a sanctuary-like atmosphere that invites relaxation after a busy day. Just a five-minute walk to Bellevue Road shops, you'll find local cafes, a post office, delis, and Cooper Park. You're also within easy reach of Bondi Junction and Double Bay's vib

Auction

View

As advertised or  
By appointment

Warren Becker  
0404 730 358



Scale in metres. Indicative only. Dimensions are approximate. All information contained herein is gathered from sources we believe to be reliable. However, we cannot guarantee its accuracy and interested persons should rely on their own enquiries.