






2/165 Victoria Road, Bellevue Hill

2  1  0 

Modern Two-Bedroom Home at Prestigious Address

This home offers two spacious bedrooms with built-in robes, a separate study for easy remote work, and a renovated bathroom with a freestanding bath. The modern kitchen includes sleek finishes, an internal laundry, and a charming breakfast bar.

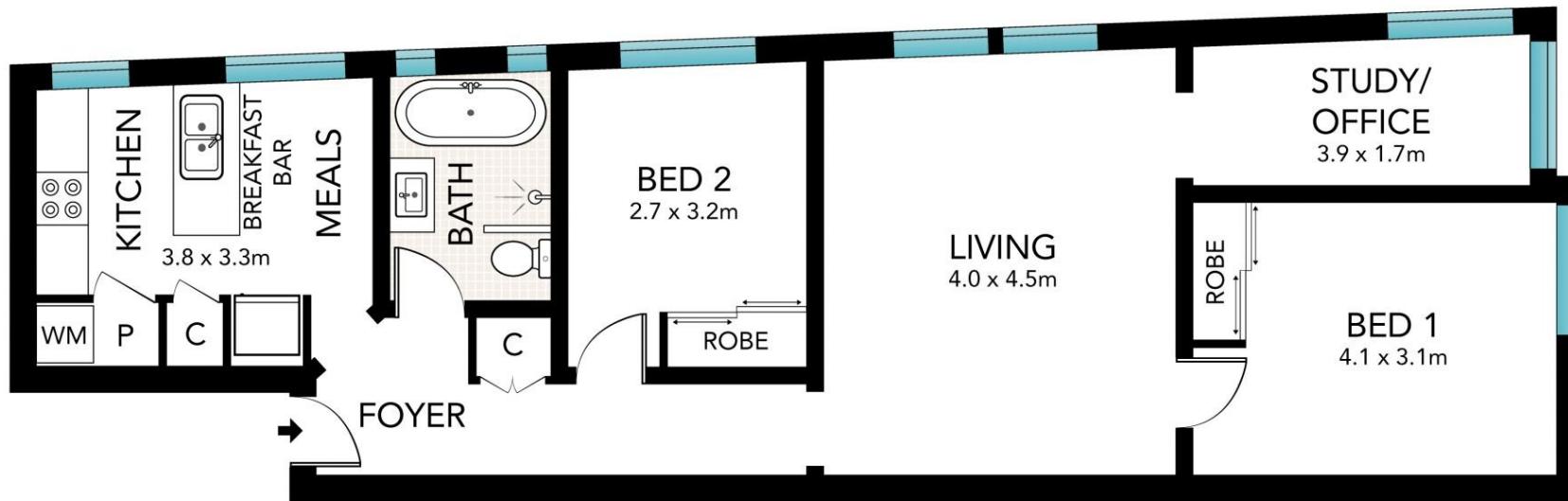
Features:

- 2 bright bedrooms with built-in wardrobes
- Separate study/office
- Modern kitchen with internal laundry and breakfast bar
- Well-equipped bathroom with freestanding bath
- Close to Bellevue Hill shops and cafes
- Minutes from Bondi Junction, restaurants, and public transport

\$900 pw

View
As advertised or
By appointment

Harriet Beynon
0412 403 336



GROUND FLOOR



Scale in metres. Indicative only. Dimensions are approximate. All information contained herein is gathered from sources we believe to be reliable. However, we cannot guarantee its accuracy and interested persons should rely on their own enquiries.